



Capital Project Referendum Capital Reserve


November 24, 2009

6am-9pm




\$14,645,000 Capital Project

- EXCEL Aid: \$ 676,418
- Local Share: \$13,968,582
- Local Share Building Aid: 83%
or \$.83 aid on a \$1.00



Ave. Cost to Taxpayer
\$100,000 Full Value Home

Senior/Enhanced STAR	STAR
\$ 7.63/year	\$ 13.39/year



Capital Reserve- New Building

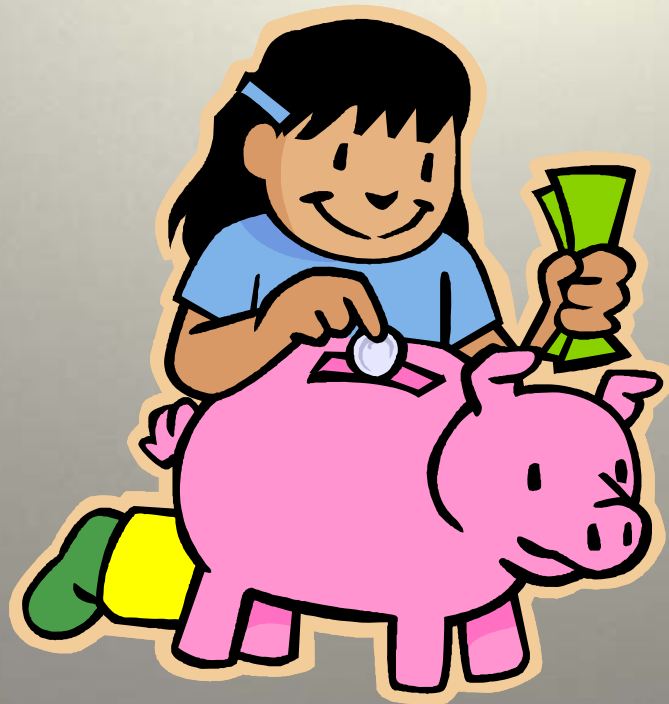
WHY???

Middle School Built 1922

Educational Space Not Appropriate
for Current and Future Needs

2010-2011 Kindergartens will enter a
95 year old middle school

What is a Capital Reserve?



Saving for the Future



Why a Capital Reserve **NOW**?

- Preparing for the Future
 - Similar to home ownership
 - Ex.: Need new roof - save and then replace



What is a Capital Reserve?

Legal Savings Account

Specific purpose

Definitive term

years allowed to save

maximum dollars allowed to save



How is a Capital Reserve Funded?

- Doesn't have to be funded
 - Referendum only establishes fund
- Board can fund
 - Excess funds available at year end
 - Funds available due to careful budgeting and monitoring
 - Budget line item
 - Requires taxpayer budget approval



Capital Project Referendum

ALL SCHOOLS

VOIP - Telephone System

Emergency/Exit Lighting Upgrades



Capital Project Referendum

HBE, ASK, High School

Security Vestibules

Window Replacements

(fire safety, energy efficiencies)





LEAVING
FOR
MEDICAL
RECOVERY PATIENT
Please call to schedule a home visit
for your loved one's care.

IS YOUR HOUSING
UNCERTAIN?
DO YOU LIVE AT A
TEMPORARY ADDRESS?
We will assist you in finding a permanent address for your loved one.

Office of
Housing Services

PLEASE NO
SMOKING







Capital Project Referendum

HBE

PA System Replacement
HVAC Automation System



Capital Project Referendum

ASK/High School

Heating Ventilator Replacement

Science Room Renovation

Locker Replacement

Guidance Upgrades

Boiler Replacement









Capital Project Referendum

Middle School

(renovations limited to maintaining building integrity)

HVAC - rooftop maintenance/repairs

Plumbing upgrades

Masonry pointing

Sidewalk replacement





CAUTION
ASBESTOS - HAZARDOUS
DO NOT DISTURB

REQUIRE PROPER TRAINING & EQUIPMENT

CONTRACTORS - INSPECTORS
PUBLIC UTILITY WORKERS -
& OTHER NON-EMPLOYEES

YOU ARE NOT ALLOWED TO ENTER THIS AREA
UNLESS YOU HAVE PERMISSION FROM THE
SUPERINTENDENT OF BUILDINGS & SAFETY
AND HAVE BEEN INFORMED OF ASBESTOS
LOCATIONS SO THAT YOU WILL NOT DISTURB
ANY ASBESTOS MATERIALS.

SEE BUILDING PRINCIPAL OR HEAD CUSTODIAN
FOR DETAILED INFORMATION ON LOCATIONS.

NO EXCEPTIONS!

**DONT BLOCK
THIS FIRE DOOR**





Capital Project Referendum

\$14,645,000

Districtwide Systems Upgrades

EXCEL aid to offset local share

Minimal Taxpayer Cost
(which will be offset by energy savings)



Capital Reserve Referendum

Approval allows for proper planning

Planning & time allow

Discussion, research and community
involvement

Let's not be caught off guard

(as in Sullivan Ave. closure)



Capital Project Referendum
Capital Reserve Referendum

VOTE

NOVEMBER 24, 2009

6am - 9pm